

SA WATER FAST FACTS FOR MINISTER

DATE: Monday, 21 November 2011

Consumption Figures (Calendar Year)

Year to date comparisons:

8am 1 January 2011 to 8am this morning	113,677 ML
Corresponding period - 2010	109,867 ML
Corresponding period - 2009	120,862 ML
Corresponding period - 2008	120,108 ML
Corresponding period - 2003 (first year of restrictions)	144,220 ML
Corresponding period - 2002 (severe drought year)	166,512 ML
Corresponding period - 5 year average	117,262 ML
Corresponding period - 10 year average	133,072 ML
Corresponding period - Waterwise measures	152,246 ML

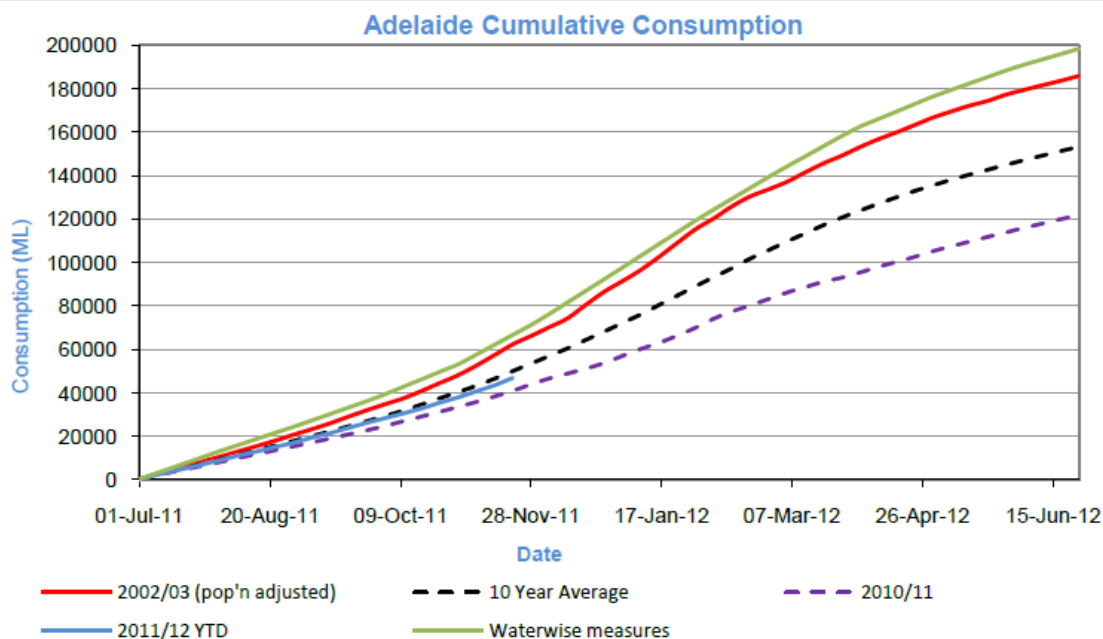
Weekly comparisons

8am 14 November 2011 to 8am this morning	3,272 ML
Corresponding period - 2010	2,609 ML
Corresponding period - 2009	3,769 ML
Corresponding period - 2008	3,018 ML
Corresponding period - 2003	3,719 ML
Corresponding period - 2002	4,953 ML
Corresponding period - 5 year average	3,249 ML
Corresponding period - 10 year average	3,503 ML
Corresponding period - Waterwise measures	4,566 ML

Yearly comparison (Calendar Year)

Total consumption - 2010	124,932 ML
Total consumption - 2009	137,347 ML
Total consumption - 2008	136,904 ML
Total consumption - 2003	169,848 ML
Total consumption - 2002	194,666 ML
Total annual consumption - 5 year average (2006-2010)	141,631 ML
Total annual consumption - 10 year average (2001-2010)	158,195 ML

Tracking against Waterwise Measures



Adelaide Reservoir Levels

Storage Levels	Current (ML)	Current (%)	Last Year (ML)	Last Year (%)
Mount Bold	31092	68%	41641	91%
Happy Valley	8802	76%	9141	79%
Millbrook	13799	84%	15476	94%
Kangaroo Creek	16387	86%	17081	90%
Hope Valley	2303	83%	2445	89%
Myponga	22487	84%	24576	92%
Warren	4472	94%	4720	99%
South Para	38644	86%	42802	96%
Barossa	4256	94%	4256	94%
Little Para	12101	58%	8301	40%
Total Adelaide	154997	78%	171003	86%

Flow into MLR Reservoirs From 1 July 2011

Total Pumped inflow (ML)	Natural inflow (ML)	Total Inflow (ML)	% Pumped
1180	62897	64077	2%

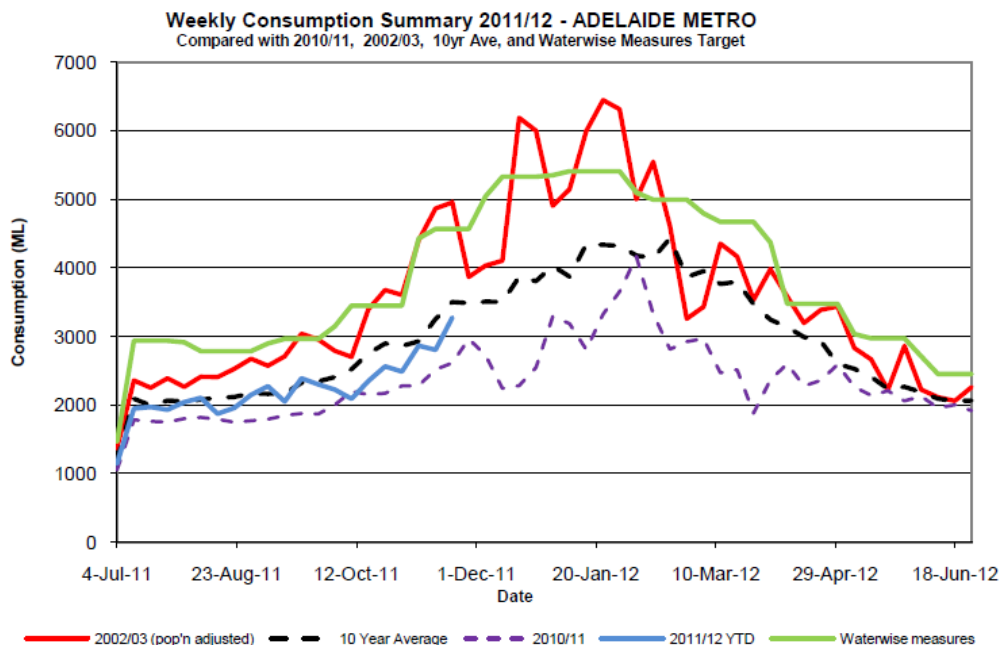
Flow into MLR Reservoirs From 1 January 2011

Total Pumped inflow (ML)	Natural inflow (ML)	Total Inflow (ML)	% Pumped
22601	88328	110929	20%

Historical Natural Inflows (Financial Years)

2002/03	66600 ML
2003/04	137300 ML
2004/05	160900 ML
2005/06	132900 ML
2006/07	35200 ML
2007/08	47100 ML
2008/09	48000 ML
2009/10	128180 ML
2010/11	139579 ML

Adelaide's Weekly Consumption Summary



MDBA Reservoir Levels as of Wednesday 16/11/11

	GL	%
Dartmouth	2,876	75
Hume	2,805	93
Lake Victoria	667	99
Menindee Lakes	1,844	107
Total MDBC Storages	8,192	88

River Murray Salinity as of Wednesday 16/11/11

Salinity (EC) (microSiemens/cm at 25° C)

	Current	Average over the last week	Average since 1 August 2011
Swan Hill	180	160	140
Euston	130	130	130
Red Cliffs	-	-	110
Merbein	160	150	110
Burtundy (Darling)	400	400	360
Lock 9	160	150	130
Lake Victoria	200	200	200
Berri	290	280	200
Waikerie	-	-	-
Morgan	310	290	240
Mannum	-	290	230
Murray Bridge	290	340	230
Milang (Lake Alex.)	470	490	530
Poltalloch (Lake Alex.)	330	290	270
Meningie (Lake Alb.)	5 440	5 290	5 620
Goolwa Barrages	640	630	1 360

River Murray Levels (relative to AHD) as of 21/11/11

Lock 1 (downstream)	0.91
Mannum Pump Station	0.77
Murray Bridge Pump Station	0.72
Goolwa Barrage	0.71
Flow into SA	8746ML

General information

For the year to date Adelaide has used about 52835ML less water when compared to the same period in 2002 which was a severe drought year.

Last week Adelaide used about 1681 ML less water when compared to the same period in 2002.